



UN-Women Strategic Plan

2022-2025

Executive Board Annual Session
22 June 2021





GLOBAL CONTEXT



26 years of the Beijing Platform for Action: persistent structural barriers amid vital progress



Global economic crisis prompted by COVID-19 pandemic



Compounded gender inequalities and disproportionate socioeconomic impact of COVID-19



Complex and protracted conflict and humanitarian crises



Population dynamics & demographic trends



Technology & innovation advances



Potential and primacy of data and big data

7 SYSTEMIC OUTCOMES TO ACHIEVE IMPACT AT SCALE





2030 **Second Decade of UN-Women**

What's new/different



Increased financing and accountability for GEWE



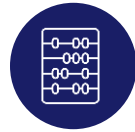
Integrated approaches for transformative results (data, climate, social norms...)



Leveraging coordination mandate to affect the UN system wide results



Programme approach to achieve impact at scale (pooled funding, standard approaches)



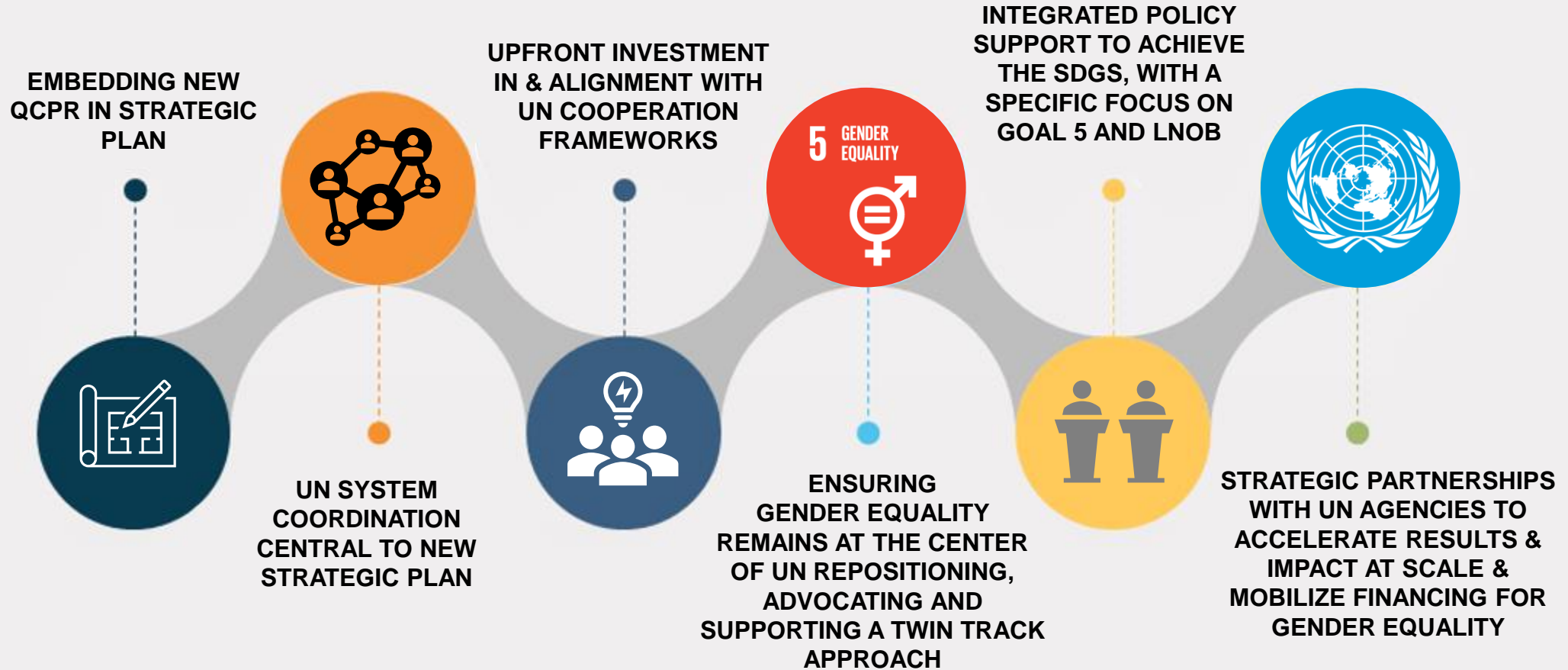
Broaden and deepen partnerships for gender equality (private sector, IFIs, men & boys)



Diverse and empowered workforce delivering feminist excellence

UN WORKING TOGETHER

STRATEGIES TO INFLUENCE THE UN SYSTEM AND TO ACHIEVE RESULTS AT SCALE



**THANK
YOU**

